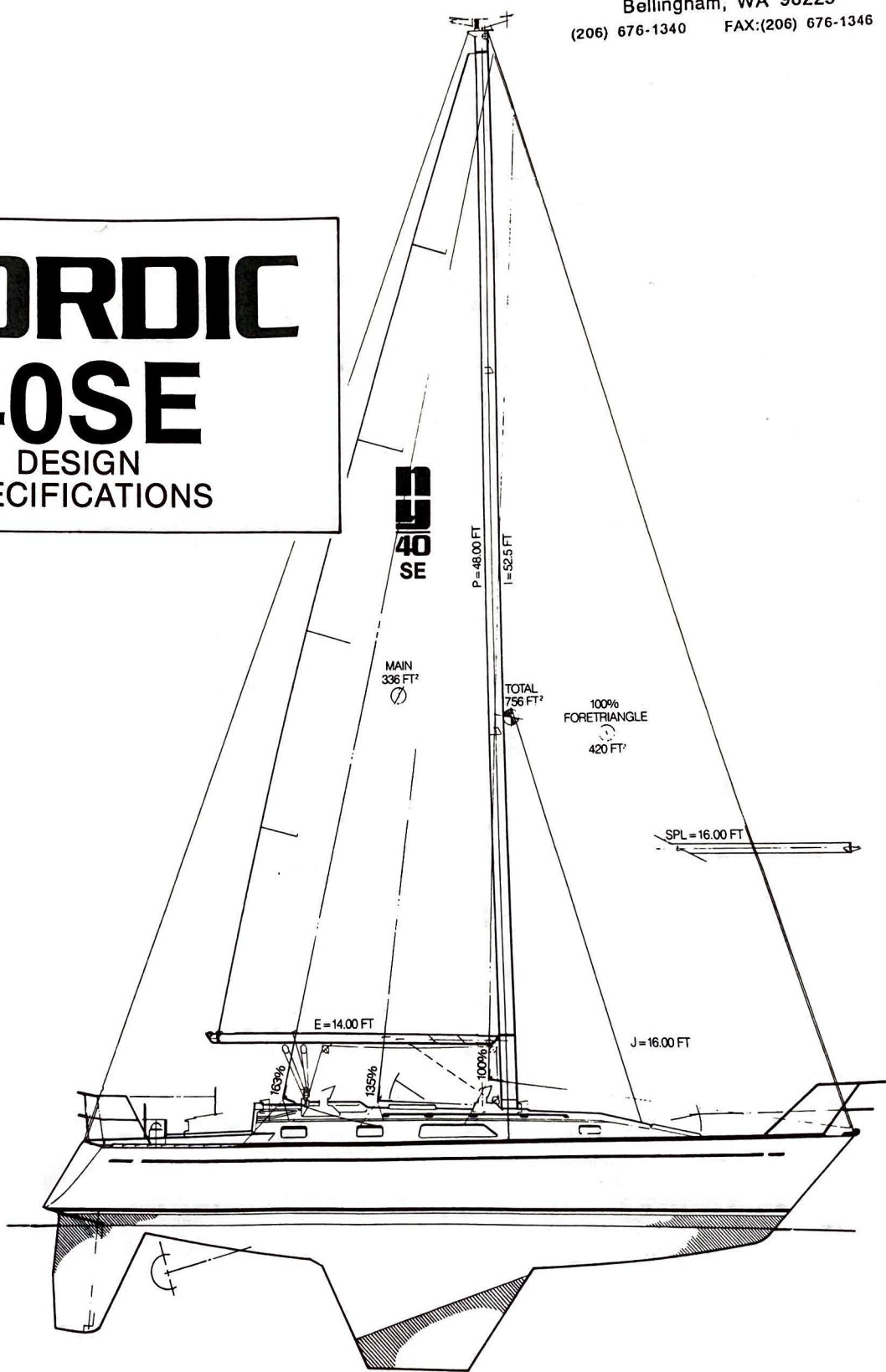
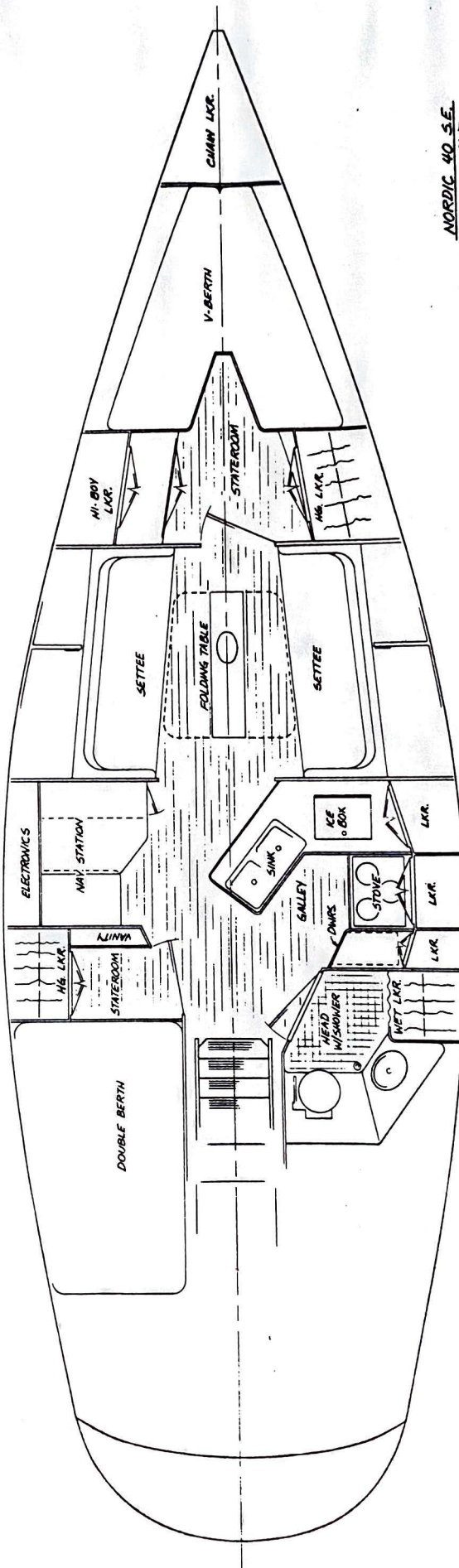


Performance Sailing Yachts
#18 Harbor Mall
Bellingham, WA 98225
(206) 676-1340 FAX:(206) 676-1346

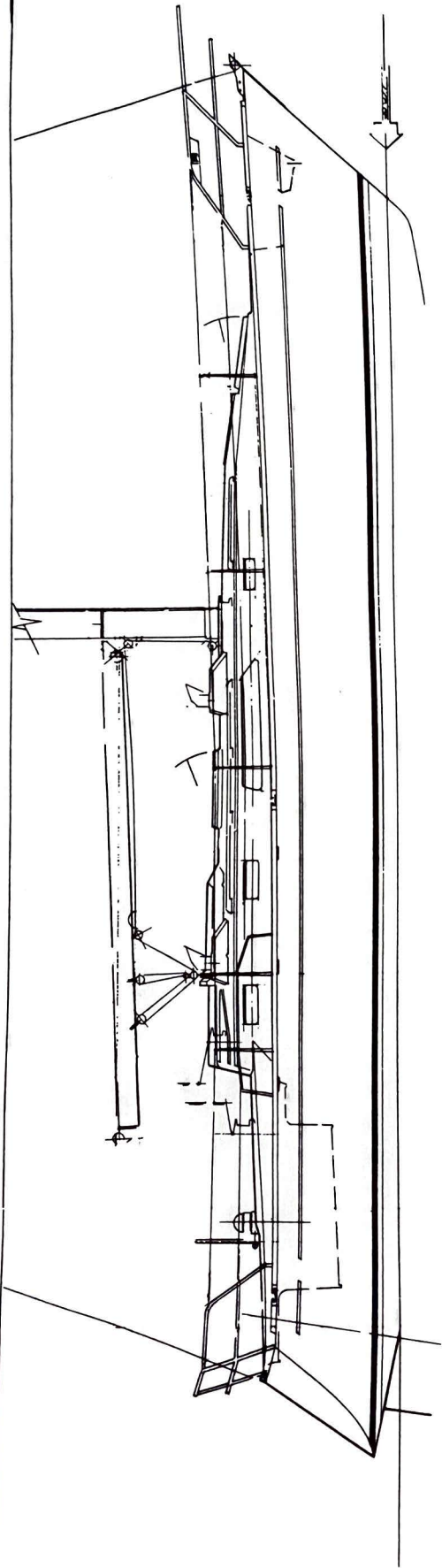
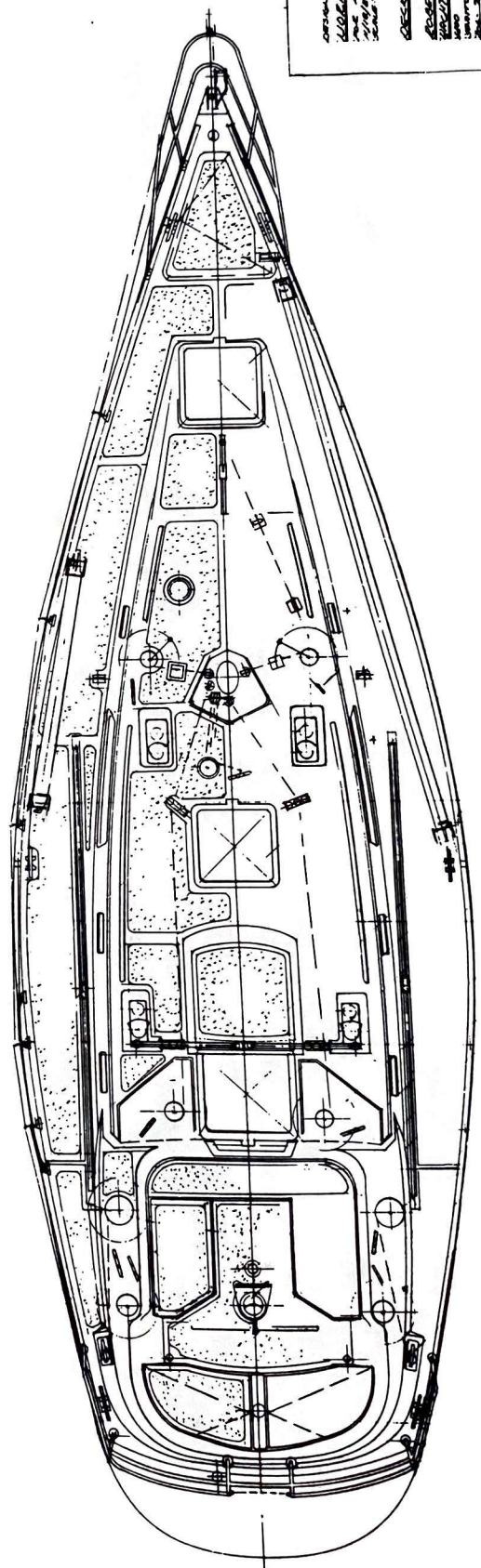
NORDIC 40SE DESIGN SPECIFICATIONS

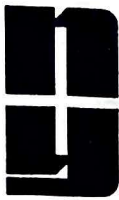




NORDIC 40 S.E.
 PRELIMINARY PLAN
 SCALE: 3/4" = 1'-0"

OPTIONAL 1/2" X 1/2" ALUMINUM ANGLE
FOR HATCH COVERS AND
DECK PLATE
ALUMINUM ANGLE
FOR HATCH COVERS AND
DECK PLATE
ALUMINUM ANGLE
FOR HATCH COVERS AND
DECK PLATE





NORDIC YACHTS INC.

P.O. BOX 964
BELLINGHAM, WASHINGTON 98227
206 / 898-1898 324-2700

April 15, 1986

DESIGN SPECIFICATIONS FOR NORDIC 40 SPECIAL EDITION

Designer.....	Robert H. Perry
Length Overall.....	39'8-1/2"
Waterline length.....	32'6"
Beam.....	12'5"
Draft(Deep Keel).....	6'6"
Draft(Shoal draft option).....	5'6"
Displacement(Approx.).....	18,000 lbs.
Ballast.....	7,091 lbs.
Sail Area.....	756 sq. ft.

HAND LAYUP FIBERGLASS HULL
BALSA CORED FIBERGLASS DECK
THRU-BOLTED HULL DECK JOINT
HEAVY ALUMINUM TOE RAIL
SKEG MOUNTED RUDDER
EXTERNAL LEAD BALLAST
STAINLESS STEEL KEEL BOLTS
PEDESTAL STEERING
40" STAINLESS WHEEL
EMERGENCY TILLER
HEAVY BULKHEAD/HULL OVERLAYS
TEAK & HOLLY CABIN SOLE
POLISHED STAINLESS CHAIN PLATES
HULL CEILING STRIPS IN MAIN CABIN
ANTIFOULING BOTTOM PAINT
WESTERBEKE DIESEL ENGINE
FRESH WATER COOLING
VIBRATION MOUNTS
2:1 REDUCTION V-DRIVE
ENGINE INSTRUMENTATION
WATER COOLED EXHAUST AND MUFFLER
SEAWATER STRAINER
STAINLESS PROPELLER SHAFT
BRONZE 2 BLADE PROPELLER
55 GALLON ALUMINUM FUEL TANK
FUEL FILTER/WATER SEPARATOR
90 AMP ENGINE START BATTERY
204 AMP SHIPS POWER BATTERY
BATTERY ISOLATOR
DOCKSIDE POWER SYSTEM
AC/DC MASTER ELECTRICAL PANEL
20AMP BATTERY CHARGER
ELECTROLYSIS BONDING

12V INTERIOR LIGHTING
INT'L NAVIGATION LIGHTS
5" COMPASS
PRESSURE WATER SYSTEM
120 GAL. FRESH WATER CAP.
STAINLESS F.W. TANKS
HOT WATER SYSTEM
SHOWER
HOLDING TANK
MARINE TOILET
2 EA. MANUAL BILGE PUMPS
AUTO ELECTRIC BILGE PUMP
REMOVABLE HEADLINER
PROPANE STOVE W/ OVEN
PROPANE SOLENOID VALVE
5 GAL. PROPANE TANK
7 CU. FT. ICE BOX
ALUMINUM FRAMED HATCHES
4 EA. DORADE BOXES
TEAK EXTERIOR HAND RAILS
6 EA. ALUM OPENING PORTS
2 EA. FIXED WINDOWS
MOORING CLEATS
STEM FITTING/BOW ROLLER
BOW AND STERN PULPITS
DOUBLE LIFELINES W/ GATES
LEWMAR WINCHES
POLYGRIP NON-SKID
HARKEN TRAVELER SYSTEM
PAINTED ALUMINUM MAST
INTERNAL HALYARDS, ETC.
1 X 19 WIRE RIGGING
ADJUSTABLE BABYSTAY

Nordic 40 SE

SPECIFICATIONS

Designer	Robert H. Perry
Length, Overall	39'8-1/2"
Waterline Length	32'6"
Beam	12'5"
Draft (Deep Keel)	6'6"
Draft (Shoal draft option)	5'6"
Displacement (Approx.)	18,000 lbs.
Ballast	7,091 lbs.
Sail Area	756 sq. ft.

STANDARD EQUIPMENT

CONSTRUCTION

HULL

One piece hand layup hull construction
Extra reinforcement in high stress areas
Longitudinal stringers & transverse floors, overlaid w/ fiberglass for hull stiffness
Limber holes for drainage to bilge sump
Deep bilge sump
Molded in recesses for thru-hull fittings, strut, & shaft log ... for reduced drag without sacrificing hull strength

DECK

Hand layup construction w/ balsa core for stiffness & thermal insulation
Unified deck layup ... all dorades, sea hoods, bosses, etc. are molded in, not added on
Molded in deck bosses for hardware & winches
Molded in anchor well w/ provision for mounting windlass
Molded in bosses for dodger installation

HULL/DECK CONNECTION

3" inward turning hull flange, molded integral in hull
Bedded w/ 3M #5200 adhesive sealant
Thru-bolted along w/ aluminum toe rail every 4-1/4"

SKEG

Full depth skeg for directional stability, rudder support, and rudder protection
Hand layup fiberglass to proven airfoil design
Cast bronze gudgeon w/ rubber cutless bearing, thru-bolted to skeg, supports rudder

RUDDER

Large rudder blade for superior steering ability
Hand layup fiberglass to proven airfoil design
1-3/4" diameter solid stainless steel rudder shaft
Full stiffening plate welded to rudder shaft
Supported by bearings at three points

BALLAST

External cast lead
Thru-bolted to hull w/ 10 ea. 3/4" diameter stainless steel keel bolts cast into lead ballast. Stainless steel backing plates on inside of hull
Flat bottom keel to facilitate haul out storage

BULKHEADS

Attached to hull & deck w/ minimum 3" wide overlays of mat & woven roving
All visible overlays are faired & covered with either formica or teak veneer

SOLE

3/4" plywood sole w/ teak & holly surface veneer
Overlaid around entire perimeter
All lift-out floorboards trimmed in solid teak
Finished with sealer & teak oil

CHAIN PLATES

Polished stainless steel
Attached w/ stainless steel bolts to bulkheads & knees
Bulkheads in way of chainplates receive extra wide overlays of mat & woven roving
Bonded to keel for lightning protection

EXTERIOR COLORS

White gelcoat hull
White gelcoat deck
Vivid blue sheer stripe & boot top stripe in premium grade vinyl striping tape

BOTTOM PAINT

Hull thoroughly sanded prior to painting
One coat blue vinyl antifouling paint

MACHINERY

ENGINE

Universal model 40 diesel auxiliary
Hurth v-drive w/ 2:1 reduction
Engine beds overlaid w/ mat & woven roving & reinforced w/ steel plates bedded in fiberglass
Bolted to engine beds w/ vibration absorbing mounts
Fresh water cooled
12 VDC marine type alternator w/ transistorized voltage regulator

ENGINE INSTRUMENTS

Located in cockpit
Include tachometer w/ hour meter, water temp gauge, ammeter, oil pressure & water temp alarms
Protective cover for instruments

ENGINE CONTROLS

Separate throttle & shift controls mounted on Edson pedestal
Color coded throttle & shift levers
Flexible jacketed shift & throttle cables

EXHAUST

Water cooled exhaust system
Fiberglass lift type muffler
Polished stainless steel thru-transom exhaust outlet

ENGINE COOLING

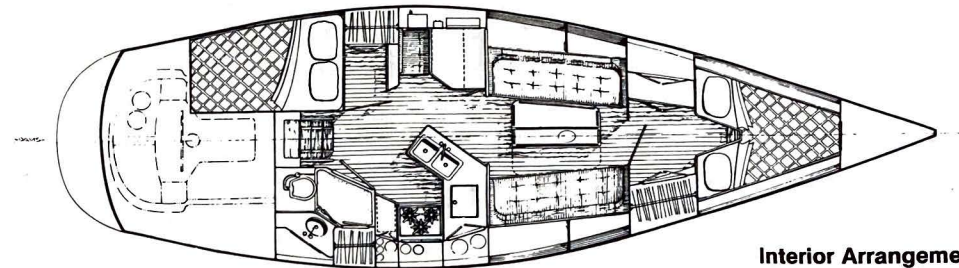
Seawater intake thru-hull w/ screen & valve
In-line seawater strainer

FUEL SYSTEM

56 gallon welded aluminum fuel tank w/ baffle
Copper fuel supply & return lines w/ flex connection to engine
Shutoff valves on supply & return lines
Racor fuel filter/water separator
Fuel tank vent w/ screen
Fuel level dip stick provided

RUNNING GEAR

1-1/4" stainless steel propeller shaft
Fabricated shaft log, recessed into hull



Interior Arrangement

Adjustable bronze stuffing box
Heavy cast bronze strut w/ rubber cutless bearing, recessed into hull
2 blade bronze fixed propeller

STEERING SYSTEM

Edson pedestal steering
Radial type drive
Stainless steel pedestal guard
Wheel brake
Pedestal mounted shift & throttle controls
40" stainless steel "destroyer" type steering wheel
Emergency tiller w/ deck plate for fast access

ELECTRICAL

12 VOLT D.C. SYSTEM

1 ea. 90 amp hour engine starting battery
1 ea. 204 amp hour ship's power battery
Fiberglass lined battery boxes, includes space for extra ship's power battery
Battery isolator for proper charging w/o switching
Battery paralleling switch
Battery disconnect switch for engine starting battery
20 amp continuous battery charger w/ stainless case & ammeter

10 VOLT A.C. SYSTEM

Dockside power system
50 ft. cordset w/ connector in cockpit
A.C. outlets in head (1), aft stateroom (1), galley (1), salon (2), forward stateroom (1)

MASTER ELECTRICAL PANEL

Located at nav station
Controls & monitors A.C. & D.C. power functions
A.C. polarity indicator
Breakers provided for all branch circuits
Voltmeters monitor input voltages, A.C. & D.C.
Indicator lights at breakers mark critical functions

ELECTROLYSIS BONDING

All bronze underwater fittings bonded
Sacrificial anodes (2) attached to strut

LIGHTING (INTERIOR)

All lighting is 12 volt D.C.
Fluorescent overhead lighting in galley (2), head (1)
Incandescent overhead lighting in aft stateroom (1), nav station (1), salon (2), forward stateroom (1)
Reading lights provided at aft berth (1), settees (2), forward berth (2), nav station (1)

LIGHTING (EXTERIOR)

High intensity international rule navigation lights
Combination port/starboard (red/green) light on bow pulpit
Stern light on stern pulpit
Combination steering light/deck floodlight on mast
Anchor light at masthead
Compass light

COMPASS

Danforth model C55 w/ 5" card
Stainless steel case
Mounted on steering pedestal

PLUMBING

FRESH WATER SYSTEM

Welded stainless steel tanks (2) w/ baffles & vents
Total capacity 120 gallons
Water pressure pump w/ accumulator tank
Piping is polybutylene tubing & reinforced vinyl hose
6 gallon hot water tank (110 volt & engine heated)
Pressure hot & cold supply to head & galley
Combination faucet/shower head w/ flexible hose provided in head

WASTE SYSTEM

Par marine toilet
Flexible bladder type holding tank
Dockside pumpout/overboard discharge w/ selector valve

BILGE DRAINAGE SYSTEM

Extra deep bilge sump
1 ea. 1500 gph electric bilge pump w/ automatic float switch
2 ea. 16 gpm (max) manual bilge pumps
Strainers on bilge suction lines

UNDERWATER FITTINGS

RC marine glass filled nylon thru-hulls, flush mounted
RC marine glass filled nylon ball valves
Nylon thru-hulls & valves are impervious to electrolysis
All hoses attached w/ stainless steel hose clamps

INTERIOR

JOINERWORK

Bulkhead & furniture surfaces are teak veneer or Corex (mill installed formica surface laminate)
Corex faced settee & berth flats ... easy to clean
Positive finger latches on all cabinet doors & drawers
All teak sealed & oiled
Insides of lockers finished in Corex and/or painted
Visible hull areas lined with yellow cedar ceiling strips
Ceiling strips are sealed & oiled
Removable vinyl headliner panels provide access

PROPANE SYSTEM

Recessed propane storage well in cockpit, provision for 2 tanks
1 ea. 5 gallon propane tank
Solenoid actuated shutoff valve at tank
Red indicator light at propane breaker on master electrical panel

ICE BOX

One piece molded fiberglass w/ gelcoated interior surfaces
7 cu. ft. capacity
Insulated w/ 3" minimum polyurethane foam, molded onto box
Wrapped w/ vapor barrier
Drain line to bilge sump, loop in line slows loss of cold

HANDRAILS

Teak overhead handrails port & starboard in main cabin
Teak handrail at companionway
Teak handrail over nav station
Teak handrail over galley

AFT STATEROOM

7 ft. long double berth
5" foam berth cushion
Drawers (2) under berth
Hanging locker
Vanity shell/locker w/ mirror
Dorade & portlight ventilation

HEAD

Molded fiberglass head/shower enclosure
Wet locker
Vanity w/ stainless sink
Mirror

GALLEY

7 cu. ft. ice box
Deep double stainless sinks
Force 10 stainless stove w/ oven
3 drawers & 4 lockers
Door access to trash bucket

NAV STATION

Large nav table w/ chart storage
Locker storage under table
Seat w/ backrest cushion
Large area for electronics installation

SALON

6'6" long settees
4" sculptured cushions w/ curved end bolsters
Storage shelves behind settees
Double leaf dinette table w/ bin storage
Teak paneled bulkheads w/ teak trim

FORWARD STATEROOM

7 ft. long v-berth w/ storage under
5" foam berth cushions
Access to chain locker
Large hanging locker
Large dresser/shelf locker
Door for privacy

DECK

HATCHES, PORTLIGHTS, WINDOWS & DORADES

Atkins Hoyle cast aluminum frame hatches w/ tinted plastic
28"x28" sliding companionway hatch, latches from inside
28"x28" foredeck hatch
23"x23" main cabin hatch
Lewmar aluminum opening portlights (6) w/ screens
Tinted fixed windows w/ fiberglass exterior frames & teak interior trim
4 ea. dorade vents w/ screens

RAILINGS & LIFELINES

Teak handrails port & starboard on cabin top
28" welded & polished bow pulpit
28" welded & polished stern pulpit w/ horseshoe buoy holders
28" stainless steel stanchions
Stanchion bases bolt thru-deck & lock into toe rail
Double vinyl coated lifelines w/ stainless steel fittings
Lifeline gates port & starboard

MOORING FITTINGS

Welded & polished stainless steel stem fitting w/ anchor roller
4 ea. 9" aluminum mooring cleats, thru-bolted w/ backing plates
1 ea. 9" aluminum cleat in anchor well
Toe rail chocks for bow lines
Chafe plates protect deck at stern cleats

TOE RAIL

Custom extruded & anodized aluminum toe rail
Custom cast stanchion bases, chocks & end fittings coordinate w/ toe rail

DECK HARDWARE

Recessed genoa lead track
Wide block genoa lead cars
Lewmar foot blocks w/ bails for running backstays
Triple sheave deck organizer blocks
Lewmar mainsheet blocks

WINCHES

All winches are Lewmar chrome:
55CST primaries (2)
40C main halyard (1)
40C genoa halyard (1)
43C mainsheet (1)
30C reef (1)
8C outhaul (1)
2 ea. Lewmar 10" winch handles

TRAVELER

Harken big boat traveler system
4:1 purchase traveler end control units
Control lines lead to cockpit

NON-SKID

TBS polyurethane non-skid; ivory, sand, or gray
Bonded into recessed areas molded into deck

SPARS & RIGGING

MAST & BOOM

Extruded aluminum mast & boom
Linear polyurethane painted
All lines led externally
Provision for: main halyard (1)
genoa halyards (2)
reef lines (2)
boom topping lift

STANDING RIGGING

1x19 wire rope rigging
Turnbuckles include toggles
Adjustable babystay
Running backstays

RUNNING RIGGING

Rope/wire main halyard (1)
Rope/wire genoa halyard (1)
Boom topping lift (1)
Main sheet (1)
Traveler control lines (2)
Outhaul (1)
Reef lines (2)
Genoa sheets (2)

NORDIC YACHTS, INC. is constantly striving to improve its products, thus specifications and features are subject to change without notice. Drawings and photos may depict optional equipment.

JUNE 1, 1988



NORDIC YACHTS INC.

Box 964, Bellingham, Washington 98227 • (206) 384-2700
FAX 206-734-2409

Proudly Built in USA!

Performance Sailing Yachts
#18 Harbor Mall
Bellingham, WA 98225
(206) 676-1340 FAX:(206) 676-1346

NORDIC 40SE DESIGN SPECIFICATIONS

